



ATTOM

Customize for Efficiency

AgileMod™ Containment Type Modular Data Center Solution

Building foundation for sustainable digital future



Customize for Efficiency

<https://attom.tech>

AgileMod™ Containment Type Modular Data Center Solutions

The one-stop solution for sustainable digital **efficiency and protection.**



Solution Benefits

Optimized Efficiency

- Free cooling with refrigerant type indirect free cooling.
- Aisle containment no energy loss from cold/hot air mix.
- High efficient components including inverter compressors, EC fans and green refrigerant.
- Real time PUE measuring and monitoring.
- UPS supports ECO energy saving mode.

Standardized Management and Monitoring

- LEGO style standard product modules for easy duplicated management.
- Local and remote monitoring protocol for easy control and visualization.
- Real time alert/notification for peace of mind performance.
- Easy purchasing, installation, and service process with pre-defined designs.

Integrated Protection and Security

- TIER 1~4 design compatibility.
- Secure access control of each doors.
- Compatible with fire system by automatic action to top panels and air conditioners.
- Video surveillance with live view and backup recording.



Design Features

Smart Module with Larger Display



- 21 inch/43 inch display per configuration.
- Smart doors automatic open/close.
- Top panel automatic open per fire signal.
- Blue/Orange/Red lights status indication.
- Modular construction suitable for future expansion.

Green Precision Cooling



- 5-90kW Row cooling, or 5-200kW Room cooling.
- Green efficiency type free cooling options.
- High efficiency technology with inverter and EC fan
- Works for -40C ~ +55C ambient temperature.

Hybrid Power in Modular Form



- Standard design rack mount type UPS/48VDC rectifier saving space.
- VRLA and Lithium battery by configuration.
- Smart PDU per configurations.
- Built in power distribution panels configurable to T1~T4 uptime level.

Secured IT Rack System



- Secured by access control system with optional smart locking.
- 1800kg static loading capacity IT racks.
- Optional with solid rear door for better airflow management.

Insightful DCIM System



- Full communication to UPS, cooling, power panel, and all type of sensors.
- Integration with access control system.
- Integration with video surveillance system.
- Local display and settings on touch screen.
- Remote accessible from web, SMS, Email, Modbus-TCP. Optional with SNMP.

Unified Access Control System



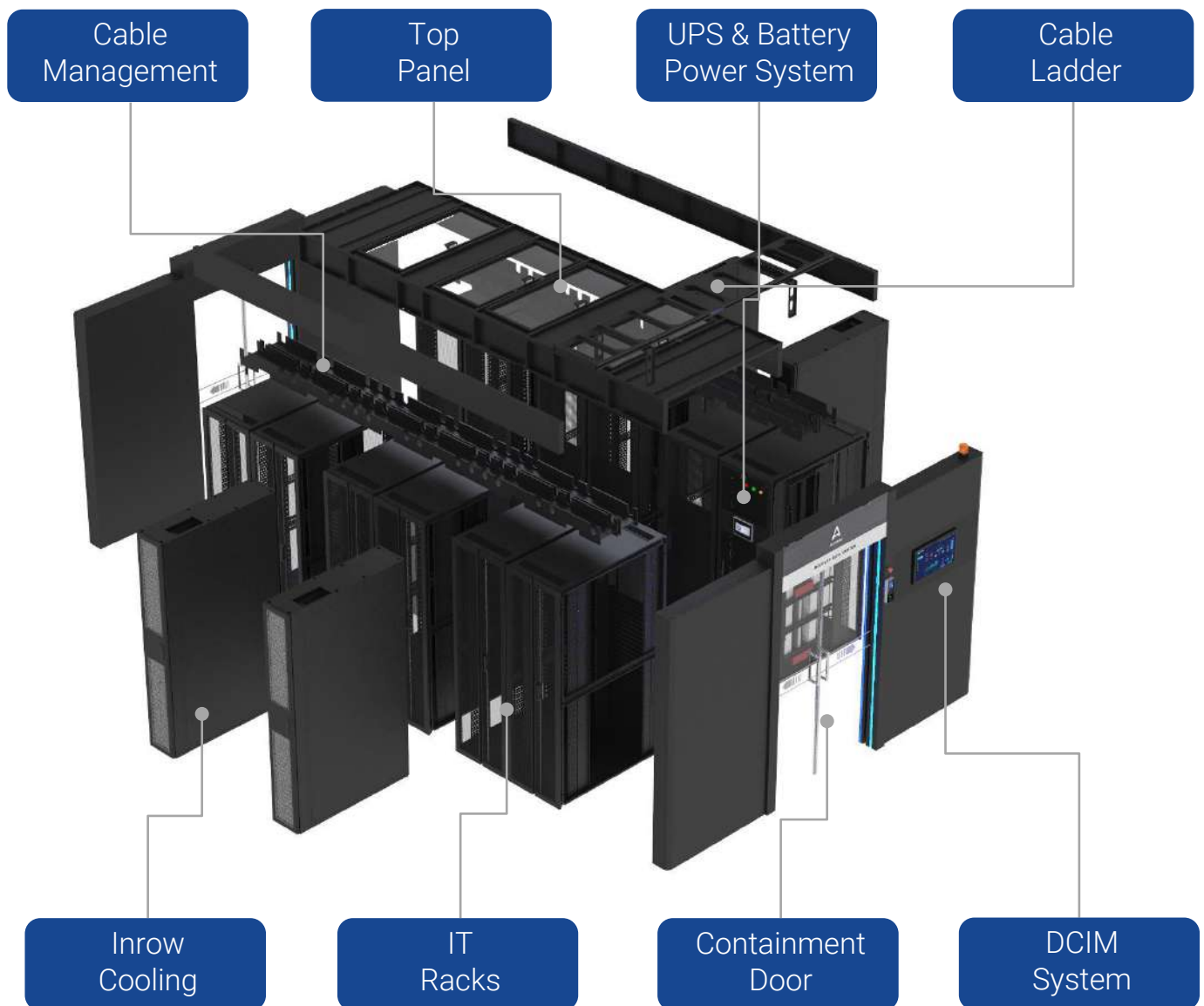
- 3 in 1 type (pin/password/fingerprint) access control protection. Optional 4 in 1 (+face recognition) access control protection.
- Central and remote management by standalone software.
- Integration into DCIM system.

Customize for Efficiency



AgileMod™ Containment Type Modular Data Center Solutions

The one-stop solution for sustainable digital **efficiency and protection.**



Customize for Efficiency



AgileMod™ Containment Type Modular Data Center Solutions

The one-stop solution for sustainable digital **efficiency and protection.**

Power System

- 3kVA~60kVA rack UPS
- 60-200kVA modular UPS rack mount.
- 250-600kVA modular UPS floor mount
- 60A~1200A 48VDC rectifier
- Basic/Smart PDU



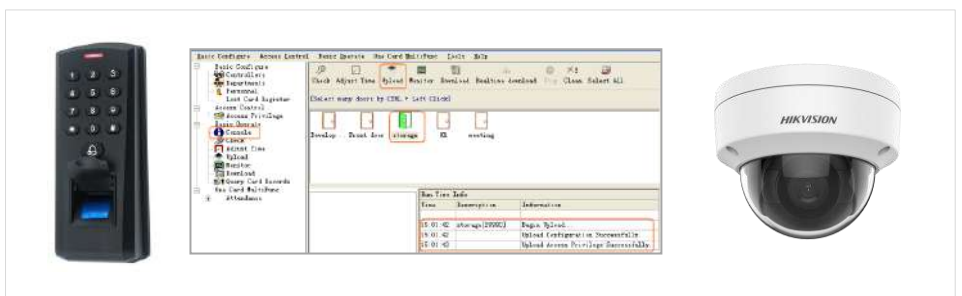
Cooling System

- 5-90kW Inrow cooling system
- 5-200kW CRAC cooling system
- Refrigerant type free cooling available upon configuration.



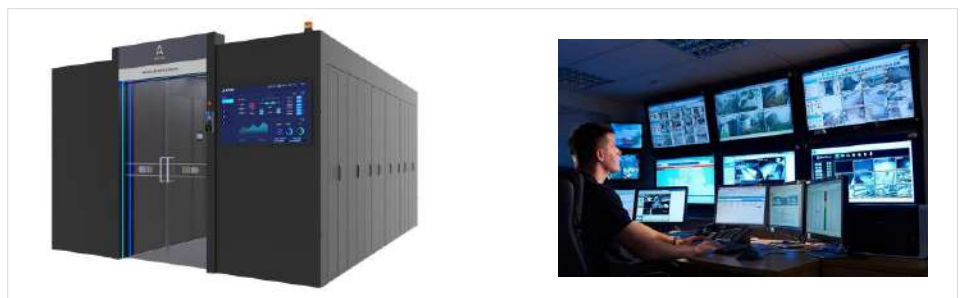
Security System

- 3 in 1 access control for each door.
- Centralized software management.
- Video surveillance.



DCIM System

- Local & remote monitoring, and alert.
- Full sensors.
- Full integration of 3rd party equipment.



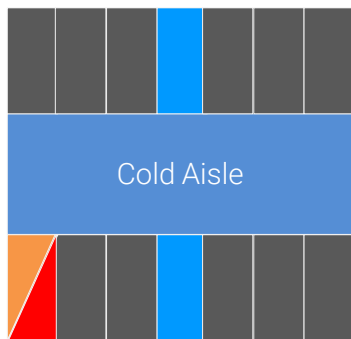
Customize for Efficiency



AgileMod™ Containment Type Modular Data Center Solutions

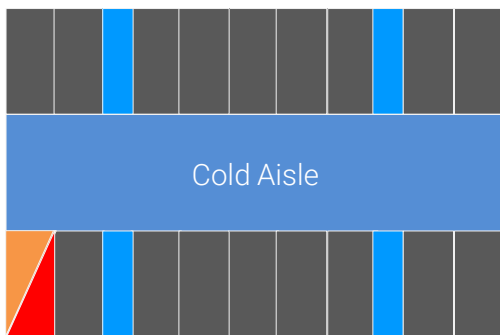
The one-stop solution for sustainable digital **efficiency and protection.**

Pre-configured Models



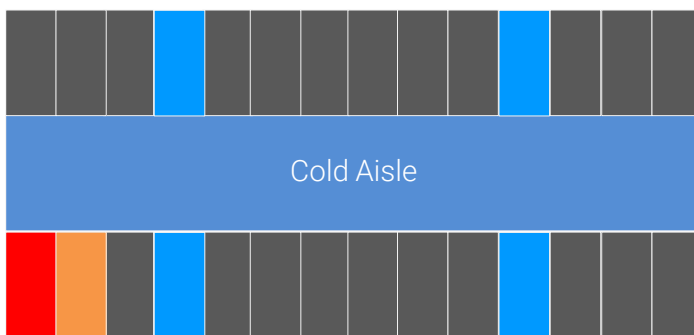
ATM-60-R12

- IT Rack: 12 Sets
- IT Power: 60kW
- Cooling: 2x 65.7kW
- UPS: 90kVA
- Redundancy: N+1



ATM-90-R18

- IT Rack: 18 Sets
- IT Power: 90kW
- Cooling: 4x 31.1kW
- UPS: 125kVA
- Redundancy: N+1



ATM-120-R24

- IT Rack: 24 Sets
- IT Power: 120kW
- Cooling: 4x 51.2kW
- UPS: 150kVA
- Redundancy: N+1

Customize for Efficiency



Technical Data | IEC Power – 380~415V/3P/50~60Hz

Product Model	ATM-60-R12	ATM-90-R18	ATM-120-R24	Configured
IT Rack No.	12	18	24	Per Definition
Rack Power Density -kW/Rack	5.0	5.0	5.0	Per Definition
Total IT Power -kW	60	90	120	Per Definition
Redundancy	N+1	N+1	N+1	T1 ~ T4
Width -mm	3600	3600	3600	Per Definition
Depth -mm	2991	2991	6058	Per Definition
Height -mm	2000	2000	2000	Per Definition
IP Level	IPX0	IPX0	IPX0	IPX0
Input Power	380-415V/3P /50-60Hz	380-415V/3P /50-60Hz	380-415V/3P /50-60Hz	380-415V/3P /50-60Hz
Power Section				
UPS -kVA	75kVA (5*15kVA)	125kVA (5*25kVA)	150kVA (6*25kVA)	3 ~ 600kVA
UPS Mount Type	Rack-Modular	Rack-Modular	Rack-Modular	Rack/Floor
Standard UPS Battery	VRLA 15min@60kW	VRLA 15min@90kW	VRLA 15min@120kW	Lithium/VRLA
AC PDU	Smart/Basic PDU	Smart/Basic PDU	Smart/Basic PDU	Per Definition
-48VDC -A	Optional	Optional	Optional	10 – 600A
48VDC Battery	Optional	Optional	Optional	<= 4 hour
48VDC PDU	Optional	Optional	Optional	Per Definition
Cooling Section				
Cooling Type	Inrow Split DX	Inrow Split DX	Inrow Split DX	Inrow/CRAC
Mount Type	Row	Row	Row	Row/Room
Capacity-kW	2x 65.7kW	4x 31.1kW	4* 51.2kW	5 ~ 200kW
DCIM Section				
Local Display	Touch Screen	Touch Screen	Touch Screen	Touch Screen
Remote Access	Web/SMS/Email	Web/SMS/Email	Web/SMS/Email	Web/SMS/Email
Reporting Protocol	Modbus/SNMP	Modbus/SNMP	Modbus/SNMP	Modbus/SNMP
UPS Mgmt.	Yes	Yes	Yes	Yes
Cooling Mgmt.	Yes	Yes	Yes	Yes
Temperature & Humidity Sensor	Yes	Yes	Yes	Yes
Fire Sensor	Smoke	Smoke	Smoke	Smoke
Water Sensor	Yes	Yes	Yes	Yes
Door Sensor	Yes	Yes	Yes	Yes
Security Section				
Access Control	RFID/Pin/Finger	RFID/Pin/Finger	RFID/Pin/Finger	RFID/Pin/Finger
Video Surveillance	Yes	Yes	Yes	Yes
Fire Fighting Section				
Fire Extinguisher	Optional	Optional	Optional	Optional
Early Detection	Optional	Optional	Optional	Optional

Customize for Efficiency



Technical Data | US Power – 208~230V/3P/50~60Hz

Product Model	ATM-60-R12	ATM-90-R18	ATM-120-R24	Configured
IT Rack No.	12	18	24	Per Definition
Rack Power Density -kW/Rack	5.0	5.0	5.0	Per Definition
Total IT Power -kW	60	90	120	Per Definition
Redundancy	N+1	N+1	N+1	T1 ~ T4
Width -mm	3600	3600	3600	Per Definition
Depth -mm	2991	2991	6058	Per Definition
Height -mm	2000	2000	2000	Per Definition
IP Level	IPX0	IPX0	IPX0	IPX0
Input Power	208-230V/3P /50-60Hz	208-230V/3P /50-60Hz	208-230V/3P /50-60Hz	208-230V/3P /50-60Hz
Power Section				
UPS -kVA	75kVA (5*15kVA)	105kVA (7*15kVA)	150kVA (10*15kVA)	3 ~ 300kVA
UPS Mount Type	Rack-Modular	Rack-Modular	Floor-Modular	Rack/Floor
Standard UPS Battery	VRLA 15min@60kW	VRLA 15min@90kW	VRLA 15min@120kW	Lithium/VRLA
AC PDU	Smart/Basic PDU	Smart/Basic PDU	Smart/Basic PDU	Per Definition
-48VDC -A	Optional	Optional	Optional	10 – 600A
48VDC Battery	Optional	Optional	Optional	<= 4 hour
48VDC PDU	Optional	Optional	Optional	Per Definition
Cooling Section				
Cooling Type	Inrow Split DX	Inrow Split DX	Inrow Split DX	Inrow/CRAC
Mount Type	Row	Row	Row	Row/Room
Capacity-kW	2x 65.7kW	4x 31.1kW	4* 51.2kW	5 ~ 200kW
DCIM Section				
Local Display	Touch Screen	Touch Screen	Touch Screen	Touch Screen
Remote Access	Web/SMS/Email	Web/SMS/Email	Web/SMS/Email	Web/SMS/Email
Reporting Protocol	Modbus/SNMP	Modbus/SNMP	Modbus/SNMP	Modbus/SNMP
UPS Mgmt.	Yes	Yes	Yes	Yes
Cooling Mgmt.	Yes	Yes	Yes	Yes
Temperature & Humidity Sensor	Yes	Yes	Yes	Yes
Fire Sensor	Smoke	Smoke	Smoke	Smoke
Water Sensor	Yes	Yes	Yes	Yes
Door Sensor	Yes	Yes	Yes	Yes
Security Section				
Access Control	RFID/Pin/Finger	RFID/Pin/Finger	RFID/Pin/Finger	RFID/Pin/Finger
Video Surveillance	Yes	Yes	Yes	Yes
Fire Fighting Section				
Fire Extinguisher	Optional	Optional	Optional	Optional
Early Detection	Optional	Optional	Optional	Optional

Customize for Efficiency



We believe the world is
being totally connected.

The connections are
creating digital intelligence
and a better future.

We design and deliver
data center
infrastructure products
to build foundation of
digital future.



USA

1450 NE Alex Way APT 299
Hillsboro, OR 97124, USA
+1 301 6789 288



CHINA

F101, #06 Yangchong Road,
Shenzhen, 518018, China
+86 755 2320 7298

Contact us

ATTOM TECHNOLOGY

Visit us on web
<https://www.atom.tech>

Email us
support@attom.tech

