

# AgileCub™ Containerized Modular Data Centers

Building foundation of sustainable digital future



Customize for Efficiency

<https://attom.tech>

# AgileCub™ Containerized Modular Data Center Solutions

25% less energy consumption, 30% quicker deployment speed

## Maximized IT Space

- 8 racks in 20F container, and 18 racks in 40F.
- Wall mount cooling no occupying rack space.
- Sliding racks for easier service operations of IT.
- Hybrid power system with UPS/Power panel/battery in same rack.

## Optimized with Energy Efficiency

- Multiple free cooling options including indirect free cooling, or direct air free cooling.
- Cold aisle containment no hot/cold air mix.
- High efficient components including inverter compressors, EC fans and green refrigerant.
- Real time PUE measuring and monitoring.

## Integrated for Easy Deployment

- Prefabricated with all components wired installed no need extra onsite works..
- All system tested and commissioned before shipment.
- Wall mount cooling no need piping and gas charging.

## Container Construction



- Build from scratch with ISO container standard.
- Thermal protected with rockwool.
- Fire protected options up-to 120min.
- Bullet proof options for high security sites.
- IP55 water/dust protection.

## Precision Cooling System



- Standard design with wall mount cooling and optional with row mount/room mount types.
- Work up-to 55C ambient temperature.
- All types of free cooling options.

## UPS Power System



- Standard design rack mount type UPS/48VDC rectifier saving space.
- VRLA and Lithium battery by configuration.
- Smart PDU per configurations.
- Built in power distribution panels configurable to T1-T4 uptime level.

## IT Rack System



- 1800kg static loading capacity IT racks.
- Optional with cold/hot aisle containment systems.
- Sliding in front/rear direction for easier service.
- Optional with access control for better management.

## DCIM System



- Full communication to UPS, cooling, power panel, and all type of sensors.
- Integration with access control system.
- Integration with video surveillance system.
- Local display and settings on touch screen.
- Remote accessible from web, SMS, Email, Modbus-TCP. Optional with SNMP.

## Access Control System



- 3 in 1 type (pin/password/fingerprint) access control protection.
- Management by standalone software.
- Integration with DCIM system.

## Fire Protection System



- Early fire detection system.
- Smart fire panel for easier fire detection and management.
- Fire agent of Novec1230/FM200.

# AgileCub™ Containerized Modular Data Center Solutions

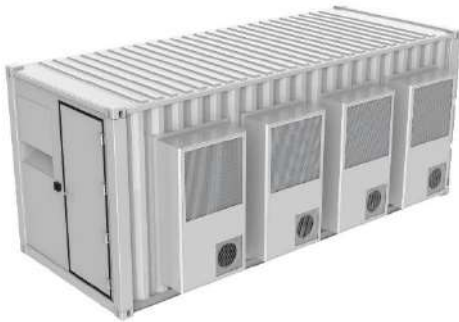
For 10F to dual 40F, all in one solutions with all types of configurations



## 10F Container Data Center

All in one 10F Container MDC fully integrated with standard rack, wall mount cooling, AC/DC power, battery, power distribution, security, monitoring and fire systems.

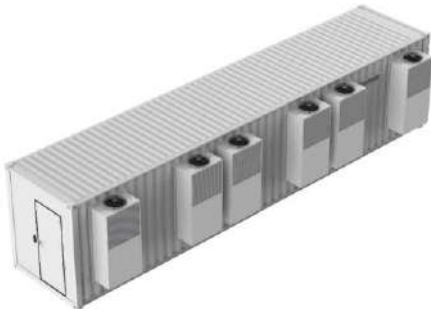
IP55 protection and thermal insulated for outdoor deployment -35C ~ 55C ambient.



## 20F Container Data Center

All in one 20F Container MDC fully integrated with standard rack, wall mount cooling, AC/DC power, battery, power distribution, security, monitoring and fire systems.

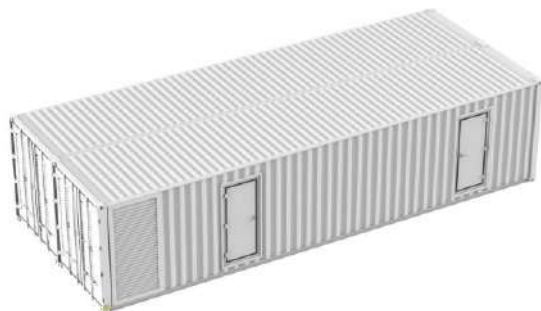
IP55 protection and thermal insulated for outdoor deployment -35C ~ 55C ambient.



## 40F Container Data Center

All in one 40F Container MDC fully integrated with standard rack, wall mount cooling, AC/DC power, battery, power distribution, security, monitoring and fire systems.

IP55 protection and thermal insulated for global deployment -35C ~ 55C ambient.



## Dual Container Data Center

Assembled from 2 or more containers, integrated with standard rack, row mount cooling, AC/DC power, battery, power distribution, security, monitoring and fire systems.

IP55 protection and thermal insulated for global deployment -35C ~ 55C ambient.

# Technical Data | IEC Power

| Product Model  | ATM-10-C03           | ATM-20-C03           | ATM-30-C08           | ATM-60-C08           | ATM-80C18            | ATM-140-C18          | ATM-160-C36          | ATM-320-C36          | Customized        |
|--|----------------------|----------------------|----------------------|----------------------|----------------------|----------------------|----------------------|----------------------|-------------------|
| IT Rack No.  | 2                    | 2                    | 6                    | 6                    | 16                   | 14                   | 32                   | 30                   | Per Definition    |
| Power Density -kW/Rack   | 5.0                  | 10.0                 | 5.0                  | 10.0                 | 5.0                  | 10.0                 | 5.0                  | 10.0                 | Per Definition    |
| Redundancy   | N+1                  | N+1                  | N+1                  | N+1                  | N+1                  | N+1                  | N+1                  | N+1                  | N/N+1/2N          |
| Width -mm  | 2438                 | 2438                 | 2438                 | 2438                 | 2438                 | 2438                 | 4876                 | 4876                 | Per Definition    |
| Depth -mm  | 2991                 | 2991                 | 6058                 | 6058                 | 12192                | 12192                | 12192                | 12192                | Per Definition    |
| Height -mm   | 2896                 | 2896                 | 2896                 | 2896                 | 2896                 | 2896                 | 2896                 | 2896                 | Per Definition    |
| Weight -kg   | 4170                 | 4400                 | 8135                 | 8755                 | 16475                | 17845                | 32380                | 36000                | Per Definition    |
| IP Level   | IP55                 | IP55                 | IP55                 | IP55                 | IP55                 | IP55                 | IP55                 | IP55                 | IP55              |
| Input Power  | 380-415V/3P /50-60Hz | 380-415V/3P /50-60Hz | 380-415V/3P /50-60Hz | 380-415V/3P /50-60Hz | 380-415V/3P /50-60Hz | 380-415V/3P /50-60Hz | 380-415V/3P /50-60Hz | 380-415V/3P /50-60Hz | Per Definition    |
| <b>Power Section</b>   |                      |                      |                      |                      |                      |                      |                      |                      |                   |
| UPS -kVA   | 2* 10                | 3* 10                | 3* 15                | 5* 15                | 5* 25                | 7* 25                | 8* 25                | 7* 50                | 3 – 500kVA        |
| UPS Mount Type   | Rack                 | Rack                 | Rack-Modular         | Rack-Modular         | Rack-Modular         | Rack-Modular         | Rack-Modular         | Floor-Modular        | Rack/Floor        |
| Standard UPS Battery   | 15min@10kW           | 15min@20kW           | 15min@30kW           | 15min@60kW           | 15min@80kW           | 15min@140kW          | 15min@160kW          | 15min@300kW          | <= 4 hour         |
| AC PDU Smart/Basic PDU Smart/Basic PDU Smart/Basic PDU Smart/Basic PDU Smart/Basic PDU Smart/Basic PDU Smart/Basic PDU | Per Definition       |                      |                      |                      |                      |                      |                      |                      |                   |
| -48VDC -A  | Optional             | Optional             | Optional             | Optional             | Optional             | Optional             | Optional             | Optional             | 10 – 600A         |
| Standard 48VDC Battery   | Optional             | Optional             | Optional             | Optional             | Optional             | Optional             | Optional             | Optional             | <= 4 hour         |
| 48VDC Power Distribution   | Optional             | Optional             | Optional             | Optional             | Optional             | Optional             | Optional             | Optional             | Per Definition    |
| <b>Cooling Section</b>   |                      |                      |                      |                      |                      |                      |                      |                      |                   |
| Cooling Type   | Packaged DX          | Packaged DX          | Packaged DX          | Packaged DX          | Packaged DX          | Packaged DX          | Packaged DX          | Packaged DX          | Packaged/Split    |
| Mount Type   | Wall                 | Wall                 | Wall                 | Wall                 | Wall                 | Wall                 | Wall                 | Wall                 | Row/Room/Wall     |
| Capacity-kW  | 2* 12.5              | 2* 21.2              | 3* 17.5              | 4* 21.2              | 5* 21.2              | 8* 21.2              | 10* 21.2             | 18* 21.2             | 1.5 – 200.0kW     |
| <b>DCIM Section</b>  |                      |                      |                      |                      |                      |                      |                      |                      |                   |
| Local Display  | Touch Screen         | Touch Screen         | Touch Screen         | Touch Screen         | Touch Screen         | Touch Screen         | Touch Screen         | Touch Screen         | Touch Screen      |
| Remote Access  | Web Access           | Web Access           | Web Access           | Web Access           | Web Access           | Web Access           | Web Access           | Web Access           | Web Access        |
| Reporting Protocol   | Modbus/SNMP          | Modbus/SNMP          | Modbus/SNMP          | Modbus/SNMP          | Modbus/SNMP          | Modbus/SNMP          | Modbus/SNMP          | Modbus/SNMP          | Modbus/SNMP       |
| UPS Mgmt.  | Yes                  | Yes                  | Yes                  | Yes                  | Yes                  | Yes                  | Yes                  | Yes                  | Yes               |
| Cooling Mgmt.  | Yes                  | Yes                  | Yes                  | Yes                  | Yes                  | Yes                  | Yes                  | Yes                  | Yes               |
| Temperature Humidity Sensor  | Yes                  | Yes                  | Yes                  | Yes                  | Yes                  | Yes                  | Yes                  | Yes                  | Yes               |
| Fire Sensor  | Smoke                | Smoke                | Smoke                | Smoke                | Smoke                | Smoke                | Smoke                | Smoke                | Smoke             |
| Water Sensor   | Yes                  | Yes                  | Yes                  | Yes                  | Yes                  | Yes                  | Yes                  | Yes                  | Yes               |
| Door Sensor  | Yes                  | Yes                  | Yes                  | Yes                  | Yes                  | Yes                  | Yes                  | Yes                  | Yes               |
| <b>Security Section</b>  |                      |                      |                      |                      |                      |                      |                      |                      |                   |
| Access Control   | RFID/Pin/Finger      | RFID/Pin/Finger      | RFID/Pin/Finger      | RFID/Pin/Finger      | RFID/Pin/Finger      | RFID/Pin/Finger      | RFID/Pin/Finger      | RFID/Pin/Finger      | RFID/Pin/Finger   |
| Video Surveillance   | Yes                  | Yes                  | Yes                  | Yes                  | Yes                  | Yes                  | Yes                  | Yes                  | Yes               |
| <b>Fire Fighting Section</b>   |                      |                      |                      |                      |                      |                      |                      |                      |                   |
| Fire Extinguisher  | FM200 / Novec1230    | FM200 / Novec1230    | FM200 / Novec1230    | FM200 / Novec1230    | FM200 / Novec1230    | FM200 / Novec1230    | FM200 / Novec1230    | FM200 / Novec1230    | FM200 / Novec1230 |
| Early Detection  | VESDA                | VESDA                | VESDA                | VESDA                | VESDA                | VESDA                | VESDA                | VESDA                | VESDA             |

# Technical Data | US Power

| Product Model  | ATM-10-C03           | ATM-20-C03           | ATM-30-C08           | ATM-60-C08           | ATM-80C18            | ATM-140-C18          | ATM-160-C36          | ATM-320-C36          | Customized        |
|--|----------------------|----------------------|----------------------|----------------------|----------------------|----------------------|----------------------|----------------------|-------------------|
| IT Rack No.  | 2                    | 2                    | 6                    | 6                    | 16                   | 14                   | 32                   | 30                   | Per Definition    |
| Power Density -kW/Rack   | 5.0                  | 10.0                 | 5.0                  | 10.0                 | 5.0                  | 9.0                  | 5.0                  | 9.0                  | Per Definition    |
| Redundancy   | N+1                  | N+1                  | N+1                  | N+1                  | N+1                  | N+1                  | N+1                  | N+1                  | N/N+1/2N          |
| Width -mm  | 2438                 | 2438                 | 2438                 | 2438                 | 2438                 | 2438                 | 4876                 | 4876                 | Per Definition    |
| Depth -mm  | 2991                 | 2991                 | 6058                 | 6058                 | 12192                | 12192                | 12192                | 12192                | Per Definition    |
| Height -mm   | 2896                 | 2896                 | 2896                 | 2896                 | 2896                 | 2896                 | 2896                 | 2896                 | Per Definition    |
| Weight -kg   | 4170                 | 4400                 | 8135                 | 8755                 | 16475                | 17845                | 32380                | 36000                | Per Definition    |
| IP Level   | IP55                 | IP55                 | IP55                 | IP55                 | IP55                 | IP55                 | IP55                 | IP55                 | IP55              |
| Input Power  | 200-230V/3P /50-60Hz | 200-230V/3P /50-60Hz | 200-230V/3P /50-60Hz | 200-230V/3P /50-60Hz | 200-230V/3P /50-60Hz | 200-230V/3P /50-60Hz | 200-230V/3P /50-60Hz | 200-230V/3P /50-60Hz | Per Definition    |
| <b>Power Section</b>   |                      |                      |                      |                      |                      |                      |                      |                      |                   |
| UPS -kVA   | 2* 10                | 3* 10                | 4* 10                | 5* 15                | 7* 15                | 10* 15               | 14* 15               | 20* 15               | 3 – 500kVA        |
| UPS Mount Type   | Rack                 | Rack                 | Rack-Modular         | Floor-Modular        | Floor-Modular        | Floor-Modular        | Floor-Modular        | Floor-Modular        | Rack/Floor        |
| Standard UPS Battery   | 15min@10kW           | 15min@20kW           | 15min@30kW           | 15min@60kW           | 15min@80kW           | 15min@126kW          | 15min@160kW          | 15min@270kW          | <= 4 hour         |
| AC PDU Smart/Basic PDU Smart/Basic PDU Smart/Basic PDU Smart/Basic PDU Smart/Basic PDU Smart/Basic PDU Smart/Basic PDU Smart/Basic PDU | Per Definition       |                      |                      |                      |                      |                      |                      |                      |                   |
| -48VDC -A  | Optional             | Optional             | Optional             | Optional             | Optional             | Optional             | Optional             | Optional             | 10 – 600A         |
| Standard 48VDC Battery   | Optional             | Optional             | Optional             | Optional             | Optional             | Optional             | Optional             | Optional             | <= 4 hour         |
| 48VDC Power Distribution   | Optional             | Optional             | Optional             | Optional             | Optional             | Optional             | Optional             | Optional             | Per Definition    |
| <b>Cooling Section</b>   |                      |                      |                      |                      |                      |                      |                      |                      |                   |
| Cooling Type   | Packaged DX          | Packaged DX          | Packaged DX          | Packaged DX          | Packaged DX          | Packaged DX          | Packaged DX          | Packaged DX          | Packaged/Split    |
| Mount Type   | Wall                 | Wall                 | Wall                 | Wall                 | Wall                 | Wall                 | Wall                 | Wall                 | Row/Room/Wall     |
| Capacity-kW  | 2* 12.5              | 2* 21.2              | 3* 17.5              | 4* 21.2              | 5* 21.2              | 8* 21.2              | 10* 21.2             | 18* 21.2             | 1.5 – 200.0kW     |
| <b>DCIM Section</b>  |                      |                      |                      |                      |                      |                      |                      |                      |                   |
| Local Display  | Touch Screen         | Touch Screen         | Touch Screen         | Touch Screen         | Touch Screen         | Touch Screen         | Touch Screen         | Touch Screen         | Touch Screen      |
| Remote Access  | Web Access           | Web Access           | Web Access           | Web Access           | Web Access           | Web Access           | Web Access           | Web Access           | Web Access        |
| Reporting Protocol   | Modbus/SNMP          | Modbus/SNMP          | Modbus/SNMP          | Modbus/SNMP          | Modbus/SNMP          | Modbus/SNMP          | Modbus/SNMP          | Modbus/SNMP          | Modbus/SNMP       |
| UPS Mgmt.  | Yes                  | Yes                  | Yes                  | Yes                  | Yes                  | Yes                  | Yes                  | Yes                  | Yes               |
| Cooling Mgmt.  | Yes                  | Yes                  | Yes                  | Yes                  | Yes                  | Yes                  | Yes                  | Yes                  | Yes               |
| Temperature Humidity Sensor  | Yes                  | Yes                  | Yes                  | Yes                  | Yes                  | Yes                  | Yes                  | Yes                  | Yes               |
| Fire Sensor  | Smoke                | Smoke                | Smoke                | Smoke                | Smoke                | Smoke                | Smoke                | Smoke                | Smoke             |
| Water Sensor   | Yes                  | Yes                  | Yes                  | Yes                  | Yes                  | Yes                  | Yes                  | Yes                  | Yes               |
| Door Sensor  | Yes                  | Yes                  | Yes                  | Yes                  | Yes                  | Yes                  | Yes                  | Yes                  | Yes               |
| <b>Security Section</b>  |                      |                      |                      |                      |                      |                      |                      |                      |                   |
| Access Control   | RFID/Pin/Finger      | RFID/Pin/Finger      | RFID/Pin/Finger      | RFID/Pin/Finger      | RFID/Pin/Finger      | RFID/Pin/Finger      | RFID/Pin/Finger      | RFID/Pin/Finger      | RFID/Pin/Finger   |
| Video Surveillance   | Yes                  | Yes                  | Yes                  | Yes                  | Yes                  | Yes                  | Yes                  | Yes                  | Yes               |
| <b>Fire Fighting Section</b>   |                      |                      |                      |                      |                      |                      |                      |                      |                   |
| Fire Extinguisher  | FM200 / Novec1230    | FM200 / Novec1230    | FM200 / Novec1230    | FM200 / Novec1230    | FM200 / Novec1230    | FM200 / Novec1230    | FM200 / Novec1230    | FM200 / Novec1230    | FM200 / Novec1230 |
| Early Detection  | VESDA                | VESDA                | VESDA                | VESDA                | VESDA                | VESDA                | VESDA                | VESDA                | VESDA             |

Customize for Efficiency



We believe the world is  
being totally connected.

The connections are  
creating digital intelligence  
and a better future.

We design and deliver  
data center  
infrastructure products  
to build foundation of  
digital future.



USA

1450 NE Alex Way APT 299  
Hillsboro, OR 97124, USA  
+1 301 6789 288



CHINA

F101, #06 Yangchong Road,  
Shenzhen, 518018, China  
+86 755 2320 7298

Contact us

ATTOM TECHNOLOGY

Visit us on web  
<https://www.atom.tech>

Email us  
[support@attom.tech](mailto:support@attom.tech)

